

Serie F029

COMPACT THREE PHASE SAW MOTORS 

MOTORI COMPATTI TRIFASE 

KREISSÄGEMOTOREN MIT KLEINE AUSMASSE 

**MOTEURS ASYNCHRONES AVEC DIMENSIONES
LIMITÉS** 

TYPE SE (standard 3 phase)

TYPE SEF (three phase with dc security brake)

TYPE SEP (three phase with pneumatic brake)

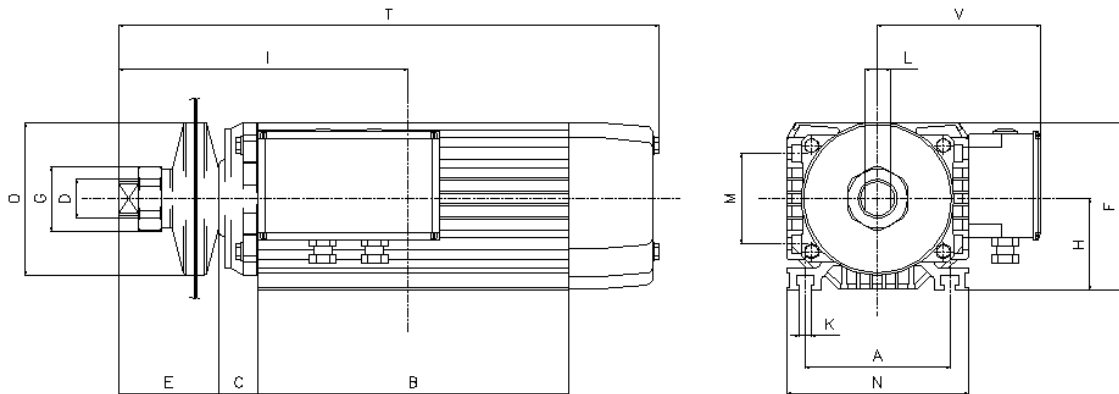


Motor Name	kw	hp	RPM at 50hz	RPM at 60hz	η %	Cos	In* 230V 50hz	In* 400V 50hz	Weight kilos
H48S2se	1.3	1.8	2700	3400	80	0.80	5	2.9	10
H48L2se	1.7	2.3	2700	3400	80	0.80	7.2	4.1	12
H71a2se	1.5	2	2860	3430	80	0.80	6.7	3.9	16.5
H71c2se	2.2	3	2875	3450	80	0.80	9.6	5.5	20
H80sa2se	2.2	3	2885	3460	83	0.84	9.3	5.4	21.5
H80Sb2se	3	4	2890	3470	85	0.84	12.5	7.2	24
H80m2se	4	5.5	2890	3470	85	0.84	16	9.3	28
H80L2se	5.5	7.5	2890	3470	85	0.80	21.6	12.5	35
H90S2se	5.5	7.5	2880	3450	86	0.85	19.1	11	40
H90L2se	7.5	10	2885	3460	86	0.86	26.5	15.3	46
H100S2se	9.2	12.5	2840	3470	86	0.80	36.5	21	60
H100L2se	11	15	2840	3470	86	0.80	44.1	25.5	68
H80sa4se	1.85	2.5	1420	1700	81	0.83	9.2	5.3	23
H80Sb4se	2.2	3	1420	1700	82	0.82	10.5	6.1	24.5
H80L4se	3	4	1435	1700	82	0.82	16	9.1	36
H100S4se	7.5	10	1440	1720	87	0.80	34.6	20	60

*drawn amps

Dimensioni di ingombro – Overall Dimensions – Dimensiones - Abmessungen

Motors from frame H71 up to frame H100

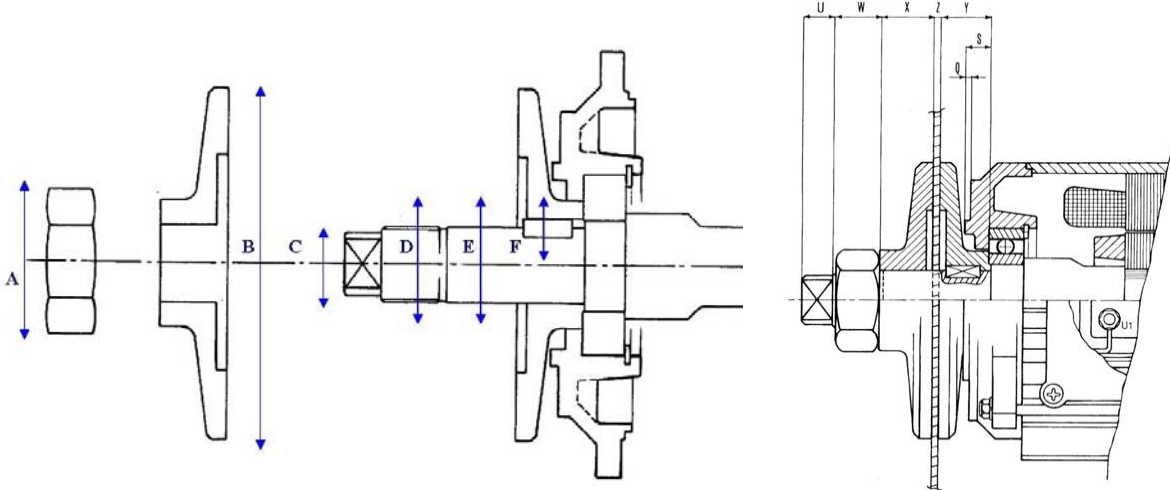


	A	B	C	E	H	K	F	V	I	T	L	D	G	O	M	N
H71	112	240	30	78	71	9	130	126	224	418	20	30	50	118	70	140
H80s	125	240	30	78	80	10.3	149	136	228	422	20	30	50	139	74	160
H80M	125	280	30	78	80	10.3	149	136	248	462	20	30	50	139	74	160
H80L	125	320	30	78	80	10.3	149	136	268	502	20	30	50	139	74	160
H90S	140	330	30	78	90	10.3	165	145	274	535	25	35	60	139	84	177
H90L	140	380	30	78	90	10.3	165	145	299	585	25	35	60	139	84	177
H100S	160	320	42	113	100	14	189	160	315	575	30	50	70	207	84	205
H100L	160	320	42	113	100	14	189	160	315	575	30	50	70	207	84	205

Measures are all expressed in millimeters [1 millimeter = 0.04 inches].

Motors with brake or without brake have the same dimensions.

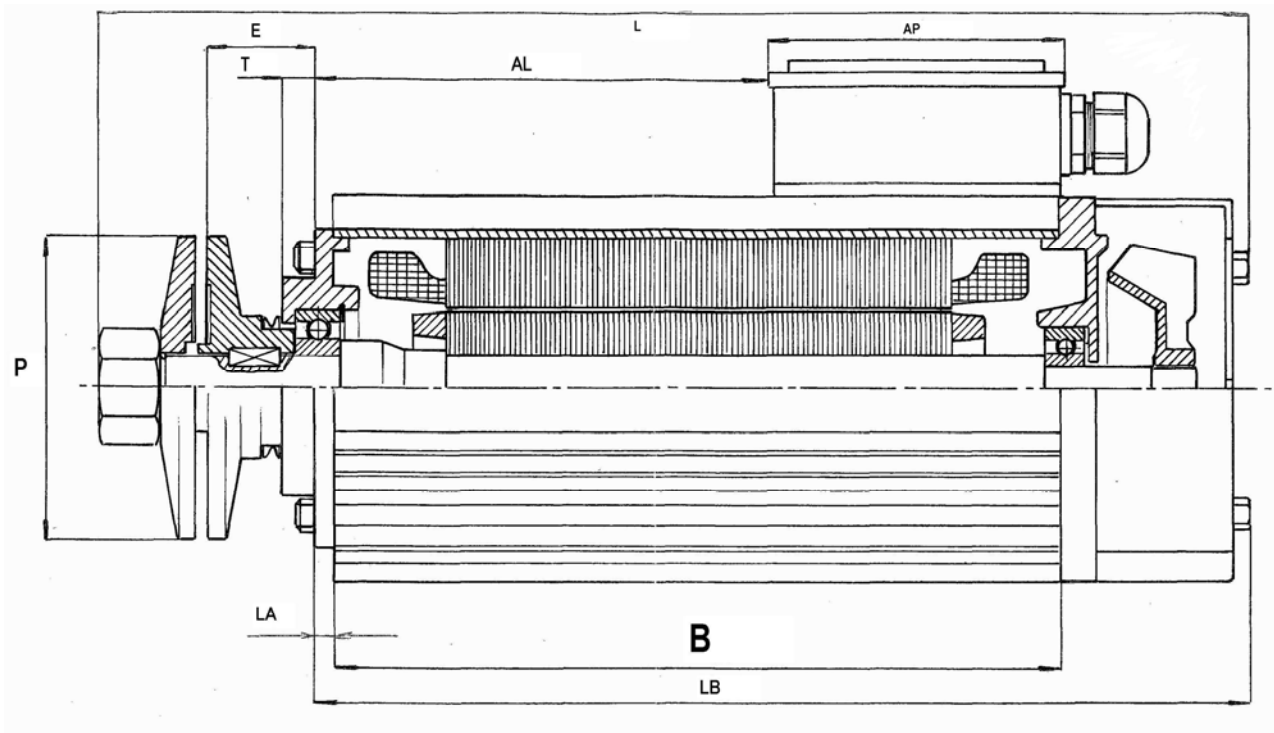
Exit Shaft drawing (motors from H71 up to H100)



In the above drawing it is clearly represented the standard exit shaft of Fimec saw motors. It is composed by a front wrench (letter C), a left or right hand thread (letter D), an a smooth exit shaft (letter E) with a key on it (letter F). Key on the smooth part of the shaft is present, in standard shafts, only for motors with brake. On request it can be machined on every shaft and modified according to your needs. Letter A shows the measures of the nut and letter B the measure of the saw flange.

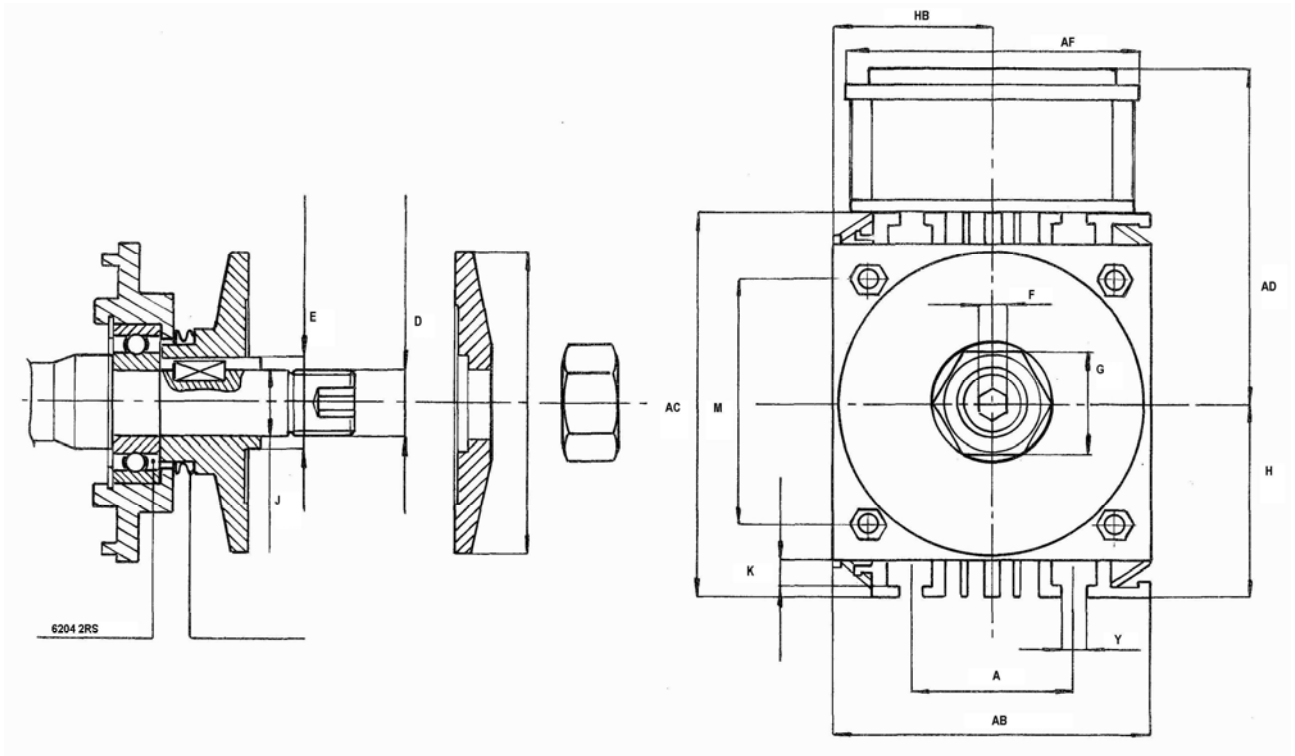
Motore	H71	H80	H90	H100
A	50	50	60	70
B	118	139	139	207
C	20	20	25	30
D	30 x 2	30 x 2	35 x 1.5	45 x 3
E	30	30	35	50
F	8 x 7 x 20	8 x 7 x 20	8 x 7 x 20	8 x 10 x 30
U	15	15	15	15
W	23	23	21	39
X	25	26	26	38
Z	3	3	3	3
Y	25	26	26	38
S	13	13	13	17
Q	3	3	3	3

Dimensions of motors frame H48



Motor	B	E	L	LA	LB	P	T	AL	AP
H48S	215	32.5	342	5.5	278	90	10	134	88
H48L	255	32.5	382	5.5	318	90	10	174	88

Exit Shaft drawing (motor frame H48)



Motor	A	AB	AC	H	HB	AD	AF	F	G	K	Y	M	D	E	J
H48S	48	95	115	57.5	47.5	101	88	8	30	7	8	73.5	20x1.5	25.4	20
H48L	48	95	115	57.5	47.5	101	88	8	30	7	8	73.5	20x1.5	25.4	20

Kemmerich Elektromotoren

51647 Gummersbach
www.elektromotoren.de

Phone +49 / 2261/ 50198-0