

P033 Getriebemotoren LAC mit Drehstrommotoren

<i>P</i> [kW]	<i>n</i> ₂ [1/min]	<i>M</i> ₂ [Nm]	<i>i</i> _R	<i>f</i> _b	Tipo Typ Type Type	Código Referenz Ref. Réf.	Intens. nominal Nennstrom Nominal intens. Intens. nomin. 380V.(A)
0.061	6.8	37	100	2.4	LACM 61/63G6- 8/6.8	3047518000	(0.45)
	8.5	33	80	3.4	LACM 61/63G6- 8/8.5	3047518800	
	6.8	38	100	1.3	LACM 49/63G6- 8/6.8	3047016000	
	8.5	33	80	1.9	LACM 49/63G6- 8/8.5	3047517800	
	10	29	65	2.5	LACM 49/63G6- 8/10	3047517650	
	14	21	100	2.0	LACM 49/56H4- 4/14	3047019000	(0.35)
	6.8	36	100	0.66	LACM 40/63G6- 8/6.8	3047011000	(0.45)
	8.5	32	80	1.0	LACM 40/63G6- 8/8.5	3047516800	
	10	28	65	1.6	LACM 40/63G6- 8/10	3047516650	
	14	20	100	1.1	LACM 40/56H4- 4/14	3047517000	(0.35)
	17	18	80	1.7	LACM 40/56H4- 4/17	3047017800	
	21	15	65	2.6	LACM 40/56H4- 4/21	3047017650	
	27	12	50	3.4	LACM 40/56H4- 4/27	3047017500	
	34	10	40	4.5	LACM 40/56H4- 4/34	3047017400	
	47	8.0	29	6.4	LACM 40/56H4- 4/47	3047017300	
	71	5.7	19	7.5	LACM 40/56H4- 4/71	3047017200	
	90	4.9	15	9.4	LACM 40/56H4- 4/90	3047017150	
	135	3.5	10	12	LACM 40/56H4- 4/135	3047017100	
	270	1.8	5	16	LACM 40/56H4- 4/270	3047017050	
	0.092	6.9	55	100	1.6	LACM 61/71F5- 8/6.9	3047527000
8.8		46	100	1.9	LACM 61/63G5- 6/8.8	3047258000	(0.43)
11		40	80	2.7	LACM 61/63G5- 6/11	3047258800	
6.9		57	100	0.83	LACM 49/71F5- 8/6.9	3047528000	(0.6)
8.8		46	100	1.0	LACM 49/63G5- 6/8.8	3047257000	(0.43)
11		40	80	1.5	LACM 49/63G5- 6/11	3047257800	
14		32	100	1.3	LACM 49/56H5- 4/14	3047029000	(0.5)
11		39	80	0.86	LACM 40/63G5- 6/11	3047256800	(0.43)
14		30	100	0.72	LACM 40/56H5- 4/14	3047027000	(0.5)
17		27	80	1.1	LACM 40/56H5- 4/17	3047027800	
21		23	65	1.7	LACM 40/56H5- 4/21	3047027650	
27		19	50	2.2	LACM 40/56H5- 4/27	3047027190	
34		16	40	3.0	LACM 40/56H5- 4/34	3047027400	
47		12	29	4.2	LACM 40/56H5- 4/47	3047027300	
71		8.5	19	5.0	LACM 40/56H5- 4/71	3047027200	
90		7.4	15	6.2	LACM 40/56H5- 4/90	3047027150	
135		5.2	10	7.8	LACM 40/56H5- 4/135	3047027100	
270		2.8	5	11	LACM 40/56H5- 4/270	3047027050	

P [kW]	n₂ [1/min]	M₂ [Nm]	i_R	f_b	Tipo Typ Type Type	Código Referenz Ref. Ref.	<i>Intens. nominal</i> <i>Nennstrom</i> <i>Nominal intens.</i> <i>Intens. nomin.</i> <i>380V.(A)</i>	
0.122	6.8	74	100	1.2	LACM 61/71F7-8/6.8	3047577000	(0.64)	
	8.8	60	100	1.4	LACM 61/63G6-6/8.8	3047269000	(0.55)	
	11	53	80	2.1	LACM 61/63G6-6/11	3047268800		
	14	41	100	1.8	LACM 61/63G5-4/14	3047038000	(0.52)	
	17	36	80	2.6	LACM 61/63G5-4/17	3047038800		
	8.8	62	100	0.77	LACM 49/63G6-6/8.8	3047037000	(0.55)	
	11	53	80	1.2	LACM 49/63G6-6/11	3047267800		
	14	42	100	1.0	LACM 49/63G5-4/14	3047037001	(0.52)	
	17	36	80	1.5	LACM 49/63G5-4/17	3047037800		
	21	32	65	2.0	LACM 49/63G5-4/21	3047037650		
	27	26	50	3.0	LACM 49/63G5-4/27	3047037500		
	11	51	80	0.65	LACM 40/63G6-6/11	3047266800	(0.55)	
	17	35	80	0.86	LACM 40/63G5-4/17	3047036800	(0.52)	
	21	30	65	1.3	LACM 40/63G5-4/21	3047036650		
	27	25	50	1.7	LACM 40/63G5-4/27	3047036500		
	34	21	40	2.3	LACM 40/63G5-4/34	3047036400		
	47	16	29	3.2	LACM 40/63G5-4/47	3047036300		
	72	11	19	3.7	LACM 40/63G5-4/72	3047026200		
	91	9.7	15	4.7	LACM 40/63G5-4/91	3047036150		
	137	6.9	10	5.9	LACM 40/63G5-4/137	3047036100		
	273	3.7	5	8.0	LACM 40/63G5-4/273	3047036050		
	0.18	8.8	89	100	0.98	LACM 61/71F5-6/8.8	3047237000	(0.8)
		11	78	80	1.4	LACM 61/71F5-6/11	3047237800	
14		61	100	1.2	LACM 61/63G6-4/14	3047048000	(0.64)	
17		53	80	1.8	LACM 61/63G6-4/17	3047048800		
14		62	100	0.69	LACM 49/63G6-4/14	3047047000		
17		53	80	1.0	LACM 49/63G6-4/17	3047047800		
21		47	65	1.3	LACM 49/63G6-4/21	3047047650		
27		38	50	2.0	LACM 49/63G6-4/27	3047047500		
21		44	65	0.88	LACM 40/63G6-4/21	3047046650		
27		36	50	1.1	LACM 40/63G6-4/27	3047046500		
34		30	40	1.5	LACM 40/63G6-4/34	3047046400		
47		23	29	2.2	LACM 40/63G6-4/47	3047045300		
72		17	19	2.5	LACM 40/63G6-4/72	3047046200		
91		14	15	3.2	LACM 40/63G6-4/91	3047046150		
137		10	10	4.0	LACM 40/63G6-4/137	3047046100		
273		5.4	5	5.4	LACM 40/63G6-4/273	3047046050		

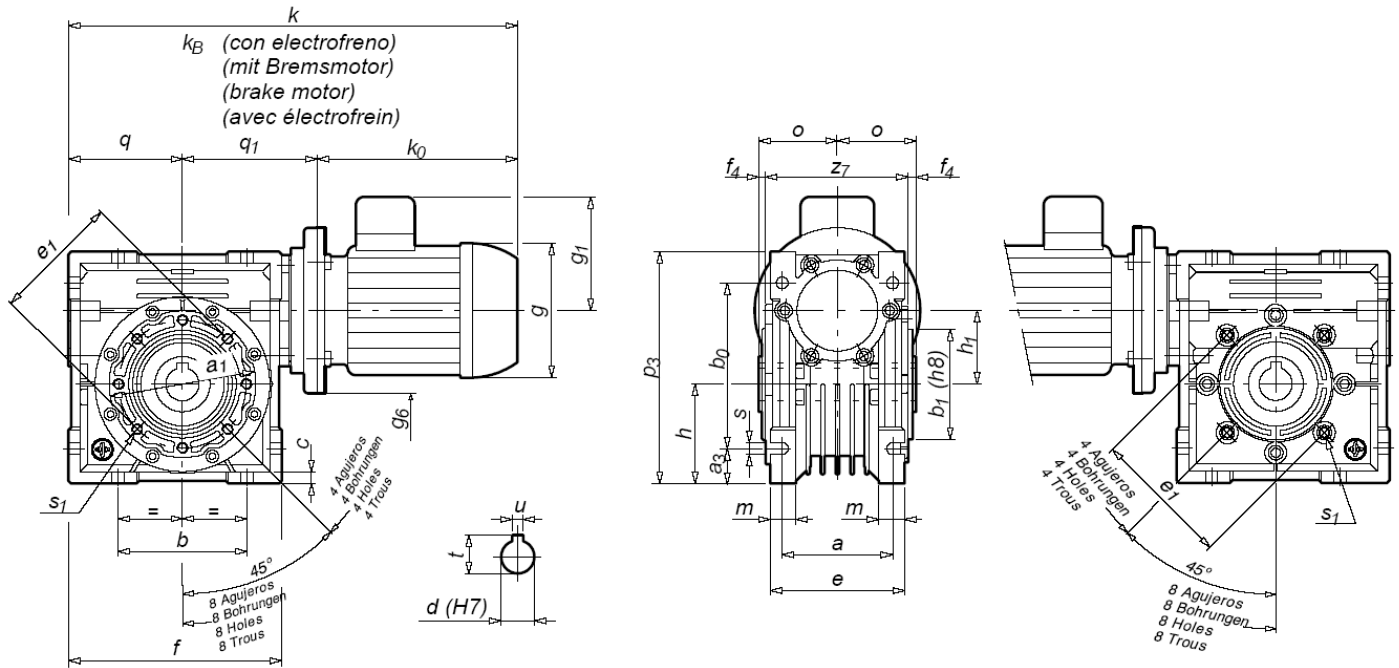
P [kW]	n₂ [1/min]	M₂ [Nm]	i_R	f_b	Tipo Typ Type Type	Código Referenz Ref. Ref.	<i>Intens. nominal</i> <i>Nennstrom</i> <i>Nominal intens.</i> <i>Intens. nomin.</i> 380V.(A)	
0.25	8.7	125	100	0.71	LACM 61/71F7-6/8.7	3047247000	(0.95)	
	11	110	80	1.0	LACM 61/71F7-6/11	3047247800		
	14	86	100	0.89	LACM 61/71K-4/14	3047057000	(0.85)	
	17	75	80	1.3	LACM 61/71K-4/17	3047057800		
	21	66	65	1.8	LACM 61/71K-4/21	3047057650		
	27	55	50	2.3	LACM 61/71K-4/27	3047057500		
	17	74	80	0.74	LACM 49/71K-4/17	3047058800		
	21	66	65	0.97	LACM 49/71K-4/21	3047058650		
	27	54	50	1.4	LACM 49/71K-4/27	3047058500		
	34	45	40	1.9	LACM 49/71K-4/34	3047058400		
	47	35	29	2.5	LACM 49/71K-4/47	3047058300		
	71	24	19	2.9	LACM 49/71K-4/71	3047058200		
	90	21	15	3.8	LACM 49/71K-4/90	3047058150		
	135	15	10	4.7	LACM 49/71K-4/135	3047058100		
	34	43	40	1.1	LACM 40/71K-4/34	3047055400		
	47	33	29	1.6	LACM 40/71K-4/47	3047055300		
	71	23	19	1.8	LACM 40/71K-4/71	3047055200		
	90	20	15	2.3	LACM 40/71K-4/90	3047055150		
	135	14	10	2.9	LACM 40/71K-4/135	3047055100		
270	7.6	5	3.9	LACM 40/71K-4/270	3047055050			
0.37	17	110	80	0.85	LACM 61/71N-4/17	3047067800	(1.25)	
	21	96	65	1.2	LACM 61/71N-4/21	3047067650		
	27	81	50	1.6	LACM 61/71N-4/27	3047067500		
	21	96	65	0.65	LACM 49/71N-4/21	3047068650		
	27	78	50	0.98	LACM 49/71N-4/27	3047068500		
	34	66	40	1.3	LACM 49/71N-4/34	3047068400		
	47	50	29	1.7	LACM 49/71N-4/47	3047068300		
	72	35	19	1.9	LACM 49/71N-4/72	3047068200		
	91	31	15	2.6	LACM 49/71N-4/91	3047068150		
	137	21	10	3.2	LACM 49/71N-4/137	3047068100		
	34	62	40	0.74	LACM 40/71N-4/34	3047065500		
	47	48	29	1.1	LACM 40/71N-4/47	3047065300		
	72	34	19	1.2	LACM 40/71N-4/72	3047065200		
	91	29	15	1.5	LACM 40/71N-4/91	3047065150		
	137	21	10	1.9	LACM 40/71N-4/137	3047065100		
	274	11	5	2.6	LACM 40/71N-4/274	3047065050		
	0.55	21	141	65	0.82	LACM 61/80K-4/21	3047076650	(1.65)
		28	118	50	1.1	LACM 61/80K-4/28	3047076500	
		35	99	40	1.4	LACM 61/80K-4/35	3047076400	
48		78	29	1.9	LACM 61/80K-4/48	3047076300		
70		59	20	2.2	LACM 61/80K-4/70	3047076200		

P [kW]	n₂ [1/min]	M₂ [Nm]	i_R	f_b	Tipo Typ Type Type	Código Referenz Ref. Réf.	<i>Intens. nominal</i> <i>Nennstrom</i> <i>Nominal intens.</i> <i>Intens. nomin.</i> <i>380V.(A)</i>	
0.55	93	46	15	3.0	LACM 61/80K-4/93	3047076150	(1.65)	
	139	32	10	3.8	LACM 61/80K-4/139	3047076100		
	278	17	5	4.8	LACM 61/80K-4/278	3047076050		
	73	52	19	1.3	LACM 49/80K-4(D.160)/73	3047075200		
	93	45	15	1.7	LACM 49/80K-4(D.160)/93	3047075150		
	139	31	10	2.2	LACM 49/80K-4(D.160)/139	3047075100		
	278	16	5	2.9	LACM 49/80K-4(D.160)/278	3047075050		
	28	160	50	0.78	LACM 61/80N-4/28	3047086500		(2.15)
	35	134	40	1.0	LACM 61/80N-4/35	3047086400		
	48	105	29	1.4	LACM 61/80N-4/48	3047086300		
70	80	20	1.6	LACM 61/80N-4/70	3047086200			
93	63	15	2.2	LACM 61/80N-4/93	3047086150			
140	44	10	2.8	LACM 61/80N-4/140	3047086100			
280	23	5	3.5	LACM 61/80N-4/280	3047086050			
74	70	19	0.96	LACM 49/80N-4(D.160)/74	3047085200			
93	61	15	1.3	LACM 49/80N-4(D.160)/93	3047085150			
140	42	10	1.6	LACM 49/80N-4(D.160)/140	3047085100			
280	22	5	2.1	LACM 49/80N-4(D.160)/280	3047085050			
1.1	35	198	40	0.70	LACM 61/90S-4/35	3047095400	(2.8)	
	70	119	20	1.1	LACM 61/90S-4/70	3047095200		
	93	93	15	1.5	LACM 61/90S-4/93	3047095150		
	139	65	10	1.9	LACM 61/90S-4/139	3047095100		
	278	33	5	2.4	LACM 61/90S-4/278	3047095050		
1.5	70	161	20	0.82	LACM 61/90L-4/70	3047105200	(3.7)	
	93	126	15	1.1	LACM 61/90L-4/93	3047105150		
	140	88	10	1.4	LACM 61/90L-4/140	3047105100		
	280	45	5	1.8	LACM 61/90L-4/280	3047105050		

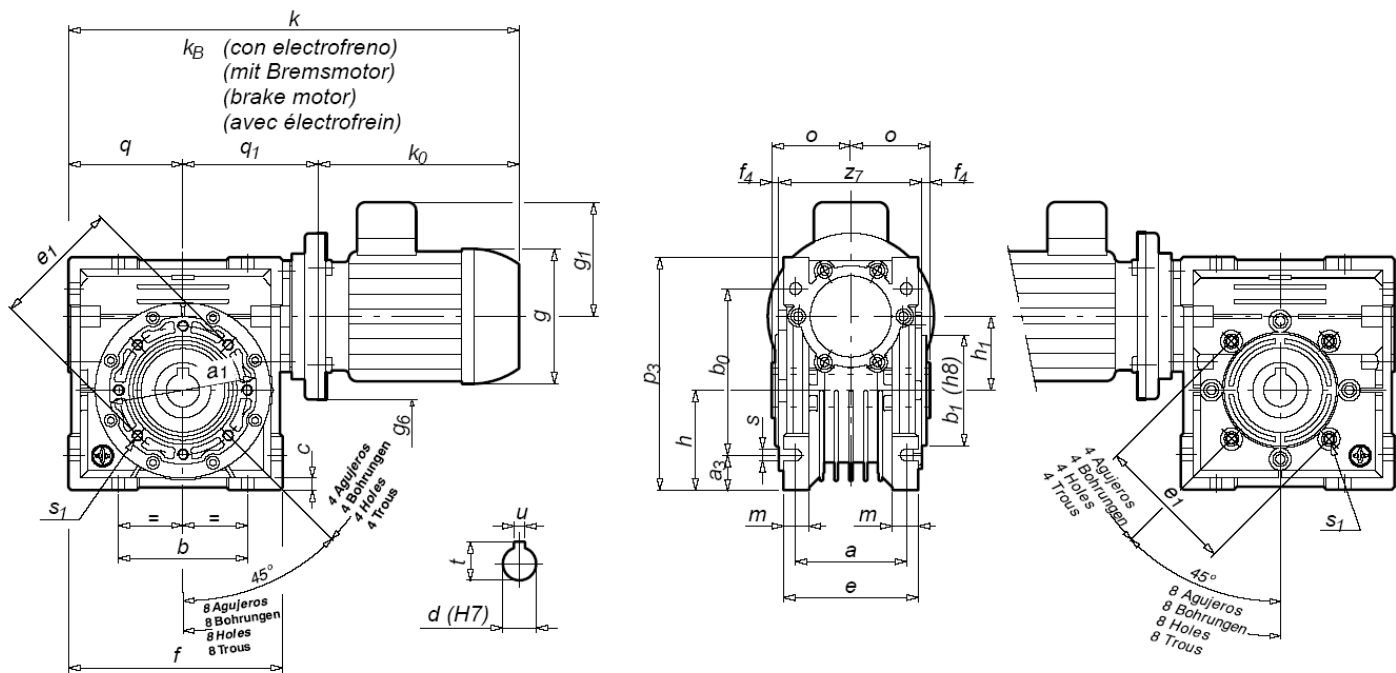
Alle Motoren auch mit Bremse lieferbar.

Die Hohlwellen-Schneckengetriebe können optional mit einer einseitigen oder doppelseitigen Steckwelle ausgerüstet werden.

P033/LAC... Abmessungen mit Motor



Tipo Typ Type	Peso Gew. Weight Poids [Kg]	g	g ₁	g ₆	k	k _B	k ₀	a	a ₁	a ₃	b	b ₀	b ₁	c	e	e ₁	f	f ₄	h	h ₁	m	o	p ₃	q	q ₁	s	s ₁	Nº agujeros Anzahl Bohrungen Nº holes Nbre. trous	z ₇	d	t	u		
40/56 (B5)	4.8	109	95	120	307	-	172																											
40/56 (B14)	4.8	109	95	105	307	-	172																											
40/63 (B5)	5.4	123	100	140	325	357	190																											
40/63 (B14B)	5.4	123	100	120	325	357	190	60	95	19	70	90	60	6.5	73	75	116	3.5	54	40	14	42	126	62	73	6.5	M6x14	4	77	18 (19)	20.8	6		
40/63 (B14A)	5.4	123	100	90	325	357	190																											
40/71 (B5)	7.6	138	109	160	349	398	214																											
40/71 (B14B)	7.6	138	109	140	349	398	214																											
40/71 (B14A)	7.6	138	109	105	349	398	214																											
49/56 (B5)	5.8	109	95	120	332	-	172																											
49/56 (B14)	5.8	109	95	105	332	-	172																											
49/63 (B5)	6.5	123	100	140	350	382	190																											
49/63 (B14B)	6.5	123	100	120	350	382	190																											
49/71 (B5)	9.5	138	109	160	374	423	214	66	111	20	80	104	70	7	79	85	132	2.5	60	49	17.5	43	146	72	88	8.5	M8x12	4	81	25 (24)	28.3 (27.3)	8		
49/71 (B14B)	9.5	138	109	140	374	423	214																											
49/71 (B14A)	9.5	138	109	105	374	423	214																											
49/80 (B14B)	14.5	156	124	160	396	452	236																											
49/80 (B14A)	14.5	156	124	120	396	452	236																											



Tipo Typ Type Type	Peso Gew. Weight Poids [Kg]	g	g ₁	g ₆	k	k _B	k ₀	a	a ₁	a ₃	b	b ₀	b ₁	c	e	e ₁	f	f ₄	h	h ₁	m	o	p ₃	q	q ₁	s	s ₁	Nº agujeros Anzahl Bohrungen Nº holes Nb. trous	z ₇	d	t	u	
61/63 (B5)	10	123	100	140	375	407	190																										
61/63 (B14B)	10	123	100	120	375	407	190																										
61/71 (B5)	12	138	109	160	399	448	214																										
61/71 (B14B)	12	138	109	140	399	448	214																										
61/80 (B5)	15.5	156	124	200	421	477	236																										
61/80 (B14B)	15.5	156	124	160	421	477	236																										
61/80 (B14A)	15.5	156	124	120	421	477	236	85	130	22	100	130	80	8	103	95	157	3	72	61	21	55	180	85	100	9	M8x12	8	104	30	33.3	8	
61/90S (B5)	20	176	129	200	439	496	254																										
61/90S (B14B)	20	176	129	160	439	496	254																										
61/90S (B14A)	20	176	129	140	439	496	254																										
61/90L (B5)	22.5	176	129	200	464	521	279																										
61/90L (B14B)	22.5	176	129	160	464	521	279																										
61/90L (B14A)	22.5	176	129	140	464	521	279																										

Abmessungen (besonders die Motorlänge) sind Richtwerte, abhängig vom Motorfabrikat. Motor-Klemmkasten wird als Standard oben montiert. Gewichte ca. Angaben.

Abmessungen können jederzeit ohne Ankündigung geändert werden. Lieferung solange der Vorrat reicht; Abbildungen und Symbolfotos müssen nicht der tatsächlichen Ausführung entsprechen. Satz- und Druckfehler sowie Änderungen vorbehalten.